



GRANITEFX™

DECORATIVE CONCRETE COATING

SEAL-KRETE® GraniteFX™ yields a natural, stone-like finish to a multitude of concrete surfaces. Ideal for walkways, patios, porches, balconies, and pool decks.

Important: Read all directions thoroughly. Recommended: Wear gloves and safety glasses. Not recommended for use on driveways and garage floors.

SURFACE PREP

Proper surface preparation is essential for project success. Before application:

- Smooth concrete surfaces must be properly etched with a commercially available concrete etching solution.
- New concrete must cure for a minimum of 30 days prior to application.
- If previous coating is present, remove any loose or peeling paint by scraping or wire brushing*.
- Remove all dirt, grease and oil with a commercially available concrete cleaner & degreaser.
- Remove mildew stains with a commercially available mildew stain remover.
- Rinse thoroughly and allow to dry.
- Priming with a bonding primer such as SEAL-KRETE Lock-Down™ is recommended for previously coated surfaces prior to application of this product.

APPLICATION

Use only when ambient air and surface temperature is between 50°F (10°C) and 90°F (32°C) and rain is not expected within 24 hours. If applying indoors, provide adequate ventilation. If more than one kit is used, intermix like products to ensure color uniformity. Mix thoroughly.

Step 1 / Base Coat: Apply using a 1/4" nap adhesive roller cover. Trim edges of surface with a high quality nylon bristle paint brush. Allow to dry 4-6 hours.

Step 2 / Sealer: Apply using a 1/4" nap adhesive roller cover. Apply in light, even coats, keeping a wet edge while rolling. Do not allow to puddle, foam or run. *Use of pump spray not recommended.*

COVERAGE: One coat will cover approx. 150 sq. ft. per gallon/3.79 L, depending on substrate and thickness applied.

DRY TIME: Allow GraniteFX Textured Base Coat (Step 1) to dry 4-6 hours between coats and prior to applying GraniteFX Clear Sealer with Crushed Stone (Step 2). GraniteFX Clear Sealer dries to touch in 1 hour at 77°F (25°C) at 50% relative humidity. Can be recoated in 4-6 hours to increase density of the stone appearance. Foot traffic ready in 24 hours. Not recommended for automotive traffic.

CLEAN-UP & DISPOSAL: Clean tools immediately after use with soap and water. Dispose of container and contents in accordance with local laws and regulations.

* Sanding or removing paint containing lead may be hazardous. For information contact the National Lead Information Center at 1-800-424-LEAD or www.epa.gov/lead.

KEEP FROM FREEZING: Store in a cool, well ventilated area above freezing.

MAINTENANCE: Clean occasionally with a mild soap and water solution. Do not use solvent, citrus or oil-based cleaners. If needed, scrub surface with a soft bristle brush or shop broom. Rinse with a garden hose or power washer (less than 1200 psi) held at least 18 inches from surface, using a fan spray pattern.

LIMITATIONS: Do not apply if rain is expected within 24 hours or if temperatures fall below 50°F (10°C) within 24 hours of application. Do not apply below grade. Do not use on basement walls or in areas subject to hydrostatic pressure or standing water. Do not apply to concrete that has not fully cured (less than 30 days).

CAUTION: KEEP OUT OF REACH OF CHILDREN

Contains Dipropylene Glycol N-Propyl Ether. Avoid contact with eyes and prolonged contact with skin. Do not ingest.

FIRST AID: In case of eye contact, flush with water for 15 minutes. If irritation persists, get medical attention. In case of skin contact, wash thoroughly with soap and water. If swallowed, drink 1-2 glasses of water and immediately contact medical services regarding any instructions to induce vomiting.



Product	No.	Unit	UPC Code	Carton Size (L x W x H)	Carton Size (cubic ft / lbs)	Carton Qty	Pallet Qty
GraniteFX Monterrey	283002	2 gallon	0 15944 28302 0	14.00 x 7.25 x 8.00	.53 / 22	1	60
GraniteFX Keystone	282002	2 gallon	0 15944 28202 3	14.00 x 7.25 x 8.00	.53 / 22	1	60
GraniteFX Gulf Shore	281002	2 gallon	0 15944 28102 6	14.00 x 7.25 x 8.00	.53 / 22	1	60
GraniteFX Sedona	284002	2 gallon	0 15944 28402 7	14.00 x 7.25 x 8.00	.53 / 22	1	60



Ready-to-Use Brush & Roll Formula • Highly Durable • Beautifies Concrete • Hides Imperfections • Non-Slip Surface • Water-Based for Easy Clean-Up

TECHNICAL INFORMATION

- Proprietary urethane-acrylic blend
- Water-based high solids
- Visual appearance: Base Coat – flat; Sealer – clear, satin finish
- UV Stability: excellent
- Low odor
- VOC < 250 g/L – EPA Method 24 – Floor Category
- Viscosity: Base Coat – 100 KU; Topcoat – 60 KU
- Clean-up: soap and water
- Shelf life: 2 years min. (closed container)
- Not recommended for automotive traffic

ASTM TESTING (on smooth, bare, etched concrete)

- ASTM E-70: 8.5–9.0
- ASTM D-4541: Adhesion to concrete 300 psi on broom finished concrete
- ASTM D-1640: dry-to-touch 1–2 hours; dry to recoat 4–6 hours; dry to light foot traffic 24 hours; dry to heavy foot traffic 72 hours
- ASTM D-3363 hardness: pencil F
- ASTM D-3359B intercoat adhesion: excellent
- ASTM G-53 ultraviolet resistance: excellent

CHEMICAL/SOLVENT RESISTANCE - ASTM D-1308

(One hour spot test)

- Water: resistant
- Gasoline: resistant
- Oil: resistant
- Salt: resistant
- Chlorine: resistant

LIMITED WARRANTY: Manufacturer/Seller makes no warranty of any kind except that this product is free from defect and is of merchantable quality. Buyer remedy for breach of warranty is limited to replacement of Seal-Krete product or refund of purchase price. Convenience Products will not be responsible for labor or the cost of labor for removal or application of any product.

TECHNICAL SUPPORT: For more information on surface prep or application guidelines, or to obtain a Material Safety Data Sheet, call 1-800-323-7357, M-F (8:00 am–5:00 pm EST) or visit our website at www.seal-krete.com.

EASY 2-STEP SYSTEM

Follow instructions for proper surface preparation prior to product application

1 APPLY TEXTURED BASE COAT



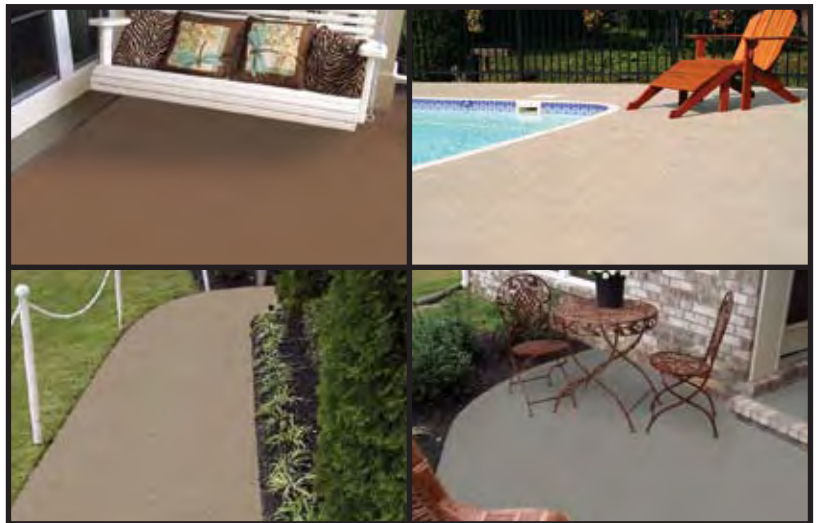
Apply one even coat using 1/4" nap adhesive roller cover. Trim edges of surface with high quality, nylon bristle paint brush. Allow to dry 2–6 hours. Stained surfaces may require a second coat.

2 APPLY CLEAR SEALER WITH CRUSHED STONE



Apply using 1/4" nap adhesive roller cover with downward pressure to achieve maximum coverage. Multiple coats will increase density of stone appearance.

INCREDIBLE, DECORATIVE RESULTS



Country of Origin: U.S.A.



Convenience Products

306 Gandy Rd., Auburndale, FL 33823 USA

Questions or comments? e-mail: tech@seal-krete.com or call 1-800-323-7357

HOW TO TREAT CONCRETE®

www.seal-krete.com